



Kenton C. Ward, Surveyor

Phone (317) 776-8495

Fax (317) 776-9628

Suite 188

One Hamilton County Square
Noblesville, Indiana 46060-2230

Map Correction-Field Verification

Drain Number: #162

Drain Length: 3973 FT.

Drain Name: John Osborn

Change +/-: -15 FT.

Date: 7-28-03

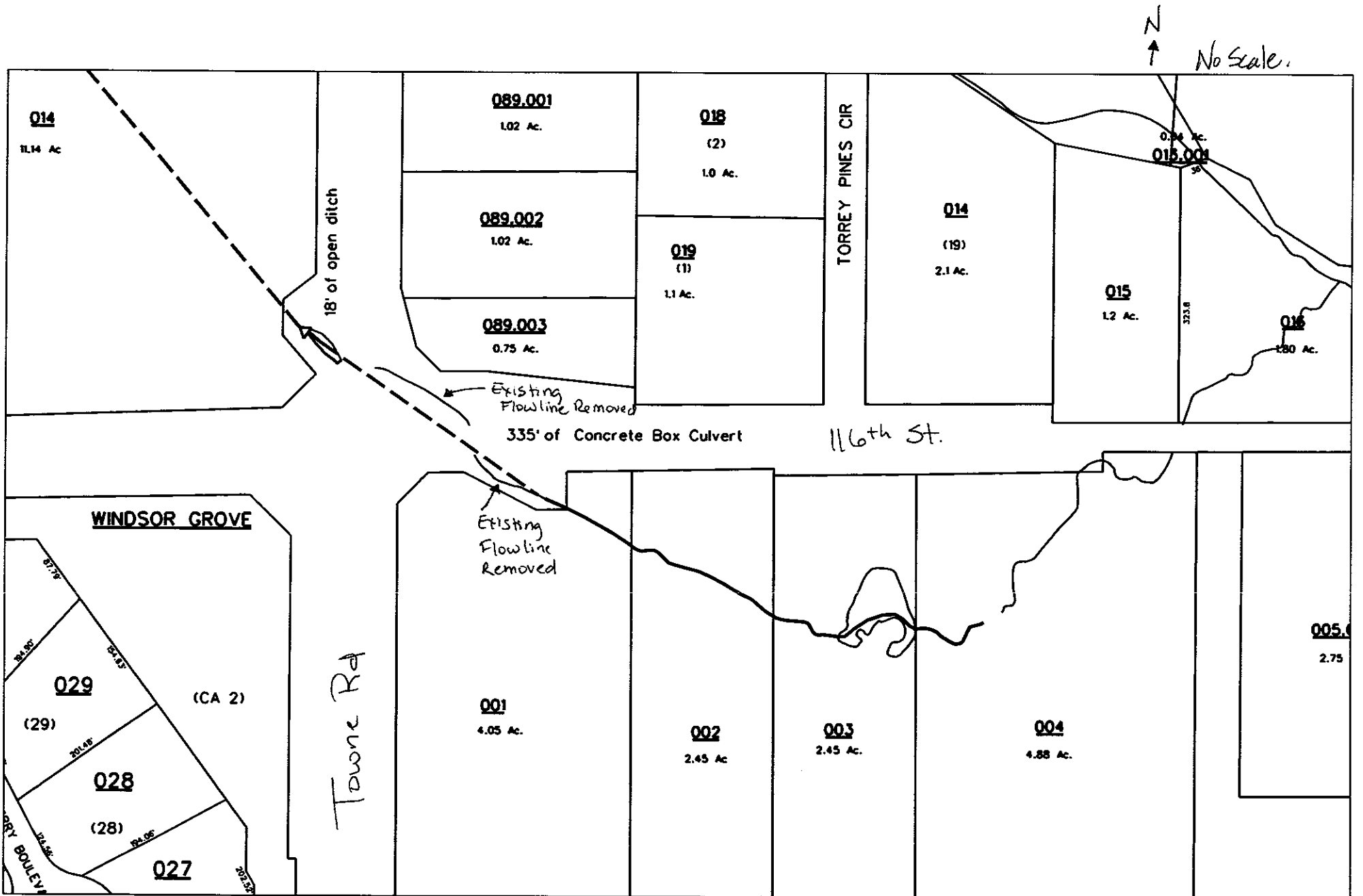
New Length: 3958 FT.

Verified By: Suzanne L. Mills

Notes & Sketch: See attached.

With the improvements at 106th & Towne, the John Osborn drain was straitened across the intersection and inclosed in a box culvert. This resulted in the removal of 350' FT of open ditch. This was replaced with 335' FT. of 106" x 48" concrete box culvert. Therefore, there was a loss of 15' FT to the length of the John Osborn regulated drain.

Suzanne L. Mills
GIS Specialist

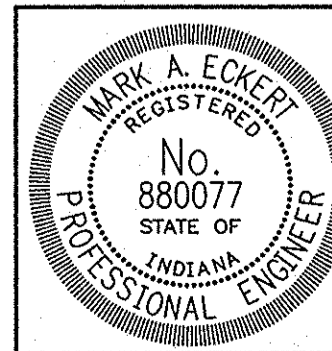


N
↑
No Scale.

reg_drain_hc.dgn 7/29/2003 3:19:02 PM

STRUCTURE DATA

STRUCTURE NUMBER	LOCATION			SIZE mm	PIPE TYPE	MANHOLE, INLET, CATCH BASIN, OR SPECIALTY STRUCTURE	LENGTH m	SKEW	COVER m	FLOW LINE		SERVICE LIFE YR.	SITE DESIGNATION	PH	BACKFILL METHOD	B BORROW FOR STR. BACKFILL m³	CLASS I RIPRAP Mg	GEOTEXTILES m³	PIPE END SECTION		GRADED BOX END SECTION		SAFETY METAL END SECTION		CONNECT TO STR. NO.	REMARKS			
	STATION	LEFT	RIGHT							CROSS	UP STREAM ELEV.								DOWN STREAM ELEV.	EA.	TYPE	SLOPE	EA.	SLOPE			EA.		
	LINE "PR-A" (TOWNE RD)																												
11	STA 60+340.0	X			375	2	Pipe Catch Basin, 600 mm	11.6	0.6	265.700	265.652	75	Non-Abr.	7.0	1	11.5										13			
12	STA 60+340.0		X		375	2	Pipe Catch Basin, 600 mm	11.3	0.6	266.000	265.958	75	Non-Abr.	7.0	1	11.2											14		
13	STA 60+352.0	X			375	2	Manhole "C-4"	51.9	1.5	265.652	265.440	75	Non-Abr.	7.0	1	110.0											15		
14	STA 60+352.0		X		375	2	Manhole "C-4"	51.9	1.2	265.958	265.693	75	Non-Abr.	7.0	1	89.8												18	
15	STA 60+405.0	X			375	2	Manhole "C-4"	31.9	1.5	265.440	265.308	75	Non-Abr.	7.0	1	65.5												19	
16	STA 60+405.0	X			300	2	Inlet "J-10"	0.9	1.0	266.184	266.109	75	Non-Abr.	7.0	1	1.2												15	
17	STA 60+405.0		X		300	2	Inlet "J-10"	0.9	1.0	266.184	266.109	75	Non-Abr.	7.0	1	1.2												18	
18	STA 60+405.0		X		375	2	Manhole "C-4"	31.9	1.2	265.693	265.528	75	Non-Abr.	7.0	1	57.2												22	
19	STA 60+438.0	X			375	2	Manhole "C-4"	39.0	1.4	265.308	265.148	75	Non-Abr.	7.0	1	72.5												25	
20	STA 60+438.0	X			300	2	Inlet "J-10"	0.9	1.0	265.885	265.810	75	Non-Abr.	7.0	1	1.2												19	
21	STA 60+438.0		X		300	2	Inlet "J-10"	0.9	1.0	265.885	265.810	75	Non-Abr.	7.0	1	1.2												22	
22	STA 60+438.0		X		375	2	Manhole "C-4"	38.8	1.2	265.528	265.328	75	Non-Abr.	7.0	1	62.2												26	
23	STA 60+471.0	X			300	2	Inlet "J-10"	6.4	1.0	265.685	265.610	75	Non-Abr.	7.0	1	8.8												25	
24	STA 60+471.0		X		300	2	Inlet "J-10"	6.2	1.0	265.582	265.507	75	Non-Abr.	7.0	1	8.5												26	
25	STA 60+478.0	X			600	2	Manhole "C-4"	24.6	1.2	264.923	264.872	75	Non-Abr.	7.0	1	35.1												26	
26	STA 60+478.0		X		600	2	Manhole "C-4"	16.0	1.0	264.872	264.821	75	Non-Abr.	7.0	1	33.8												77	
27	STA 60+518.0		X		600	2	Manhole "C-4"	3.8	1.1	264.578	264.500	75	Non-Abr.	7.0	1	8.3												32	
28	STA 60+521.0	X			375	2	Manhole "C-4"	10.0	1.2	264.897	264.787	75	Non-Abr.	7.0	1	7.6												33	
29	STA 60+521.0	X			300	2	Inlet "J-10"	0.9	1.0	265.438	265.363	75	Non-Abr.	7.0	1	0.5												28	
30	STA 60+529.0		X		300	2	Inlet "J-10"	4.0	1.0	265.229	265.154	75	Non-Abr.	7.0	1	2.2												31	
31	STA 60+529.0		X		450	2	Manhole "C-4"	13.0	1.3	264.789	264.728	75	Non-Abr.	7.0	1	9.8												27	
32	STA 60+529.2		X		2700 X 1200	---	Precast Reinforced Concrete Box	102.4	36'	0.2	264.224	264.019	75	Abr.	7.0	1	454.7	109.5	279								---	24 Units of 3.6 m x 1.8 m x 0.3 m Revet Mattress Req'd.	
33	STA 60+532.0	X			375	2	Manhole "C-4"	2.8	1.3	264.787	264.752	75	Non-Abr.	7.0	1	1.8												32	
34	STA 60+541.0	X			300	2	Inlet "B-15"	2.2	0.3	265.286	264.752	75	Non-Abr.	7.0	1	1.2												32	
34A	STA 60+545.9	X			600	---	Existing Pipe	---		?	?									1						---	Remove 9.5 m of Existing Pipe		
35	STA 60+562.0	X			375	2	Manhole "C-4"	15.0	1.4	264.901	264.676	75	Non-Abr.	7.0	1	29.8					1					---			



RECOMMENDED FOR APPROVAL _____ DATE _____
 DESIGN ENGINEER
 DESIGNED: T.S. DRAWN: C.C.
 CHECKED: M.A.E. CHECKED: T.S.

**HAMILTON COUNTY
BOARD OF COMMISSIONERS**

**STRUCTURE DATA
106th STREET & TOWNE ROAD**

HORIZONTAL SCALE 1:1000	BRIDGE FILE
VERTICAL SCALE N/A	DESIGNATION NO.
SURVEY BOOK	SHEETS 76 of
CONTRACT	PROJECT NO. PR-99-0100

FILED
MAY 2 2000
OFFICE OF HAMILTON COUNTY SURVEYOR

D:\Project\3436-273\Plans\15_Structure Data Table\3436s001.dwg Tue Mar 21 16:00:42 2000 TJS